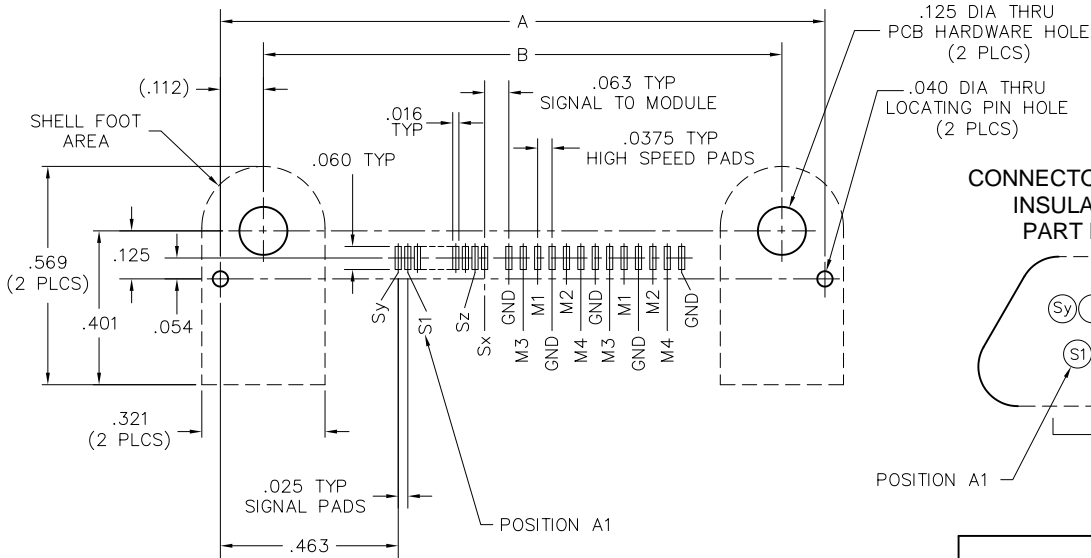


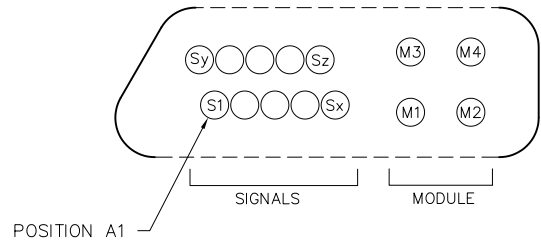
# Recommended PC Board Layout Receptacle

RUGGED H-SMT

**RECEPTACLE, RIGHT SIDE KEY**  
 INSULATOR A = SIGNAL CONTACTS  
 2 MODULES + SIGNAL SHOWN  
 PC BOARD LAYOUT  
 COMPONENT SIDE

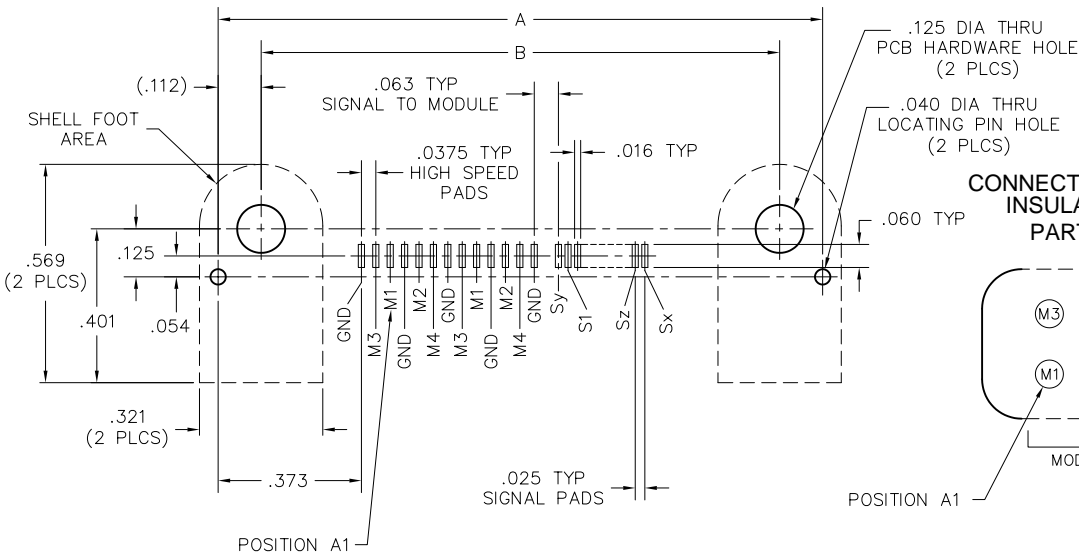


**CONNECTOR MATING FACE (RECEPTACLE)**  
 INSULATOR A = SIGNAL CONTACTS  
 PART NUMBER = RIGHT SIDE KEY

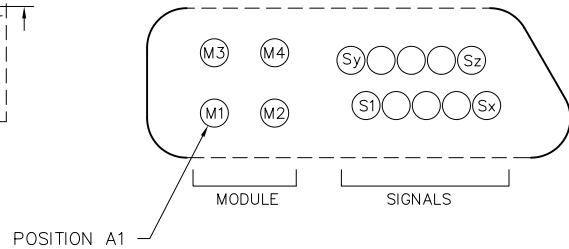


| DIMENSIONS |  |
|------------|--|
| A          | BODY LENGTH PER TABLE CALCULATION (SEE PAGE 6) MINUS 0.097 |
| B          | "A" MINUS 0.224  |

**RECEPTACLE, LEFT SIDE KEY**  
 INSULATOR A = MODULE CONTACTS  
 2 MODULES + SIGNAL SHOWN  
 PC BOARD LAYOUT  
 COMPONENT SIDE



**CONNECTOR MATING FACE (RECEPTACLE)**  
 INSULATOR A = MODULE CONTACTS  
 PART NUMBER = LEFT SIDE KEY



| SIGNAL CONTACT NUMBERING |       |       |       |       |       |
|--------------------------|-------|-------|-------|-------|-------|
|                          | SIG10 | SIG20 | SIG30 | SIG40 | SIG50 |
| Zx                       | 5     | 10    | 15    | 20    | 25    |
| Zy                       | 6     | 11    | 16    | 21    | 26    |
| Zz                       | 10    | 20    | 30    | 40    | 50    |

**NOTES:**

1. Connector module leads M3 and M4 are .080" longer than M1 and M2 PCB traces or IC programming will be required to compensate for this.
2. Receptacle interface key is swapped left-to-right from part number callout when looking at the receptacle interface.