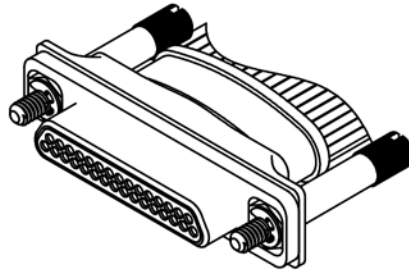




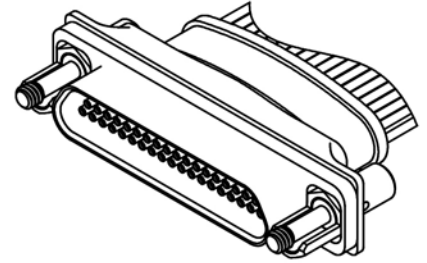
# Rugged Metal I/O (Integral Shield Termination)

.050"  
9 thru 100 Contacts

**MM**

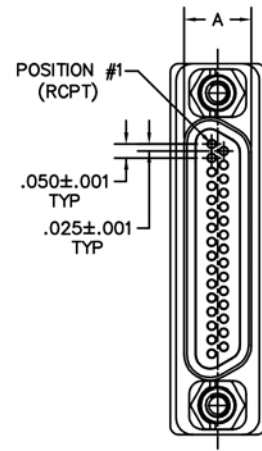
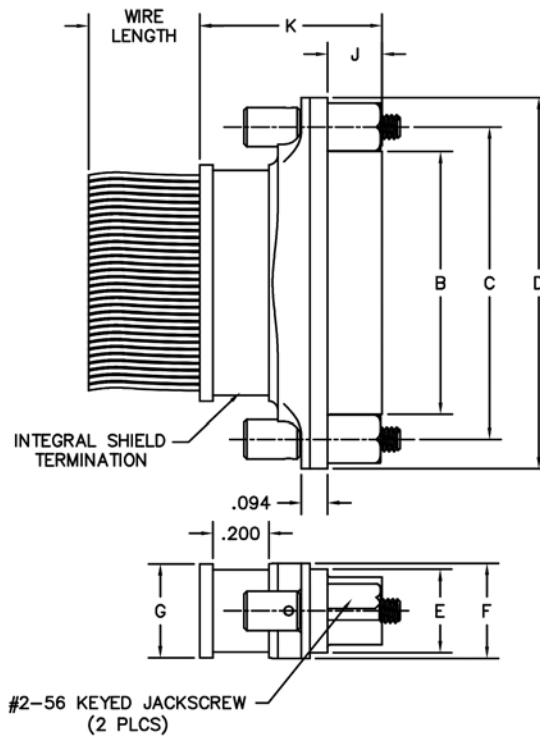
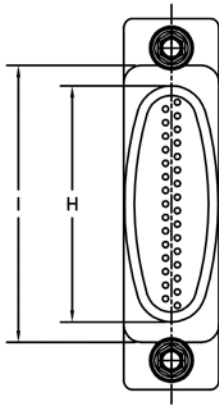


MM-2P2-031-161-44WA  
(PLUG)



MM-2Q2-031-261-99WA-KS11  
(RECEPTACLE)

MATING MATRIX	
CONNECTOR	MATES WITH
MM-2P...	MK, ML, MM, MN receptacles
MM-2Q...	MK, ML, MM, MN plugs



SIZE	CONTACT ROWS	DIMENSIONS															
		A		B		C	HARDWARE	D	E	F	G	H	I	J		K	
PLUG MAX	RCPT MAX	PLUG MAX	RCPT MAX	PLUG	RCPT									PLUG	RCPT		
9	2	.185	.251	.334	.400	.565	#2-56 UNC THD (.092 DIA THRU)	.775	.298	.340	.290	.290	.440	.183	.195	.640	.652
15				.484	.550	.715		.925				.445	.590				
21				.634	.700	.865		1.075				.595	.740				
25				.734	.800	.965		1.175				.695	.840				
31				.884	.950	1.115		1.325				.845	.990				
37				1.034	1.100	1.265		1.475				.995	1.140				
51	3	.228	.294	1.384	1.450	1.615	#4-40 UNC THD (.147 DIA THRU)	1.825	.341	.380	.367	1.345	1.490	.183	.195	.640	.652
51				.984	1.050	1.215		1.425				.945	1.090				
69				1.284	1.350	1.515		1.725				1.245	1.390				
100	4	.271	.394	1.384	1.508	1.800	#4-40 UNC THD (.147 DIA THRU)	2.160	.381	.430	.417	1.457	1.522				