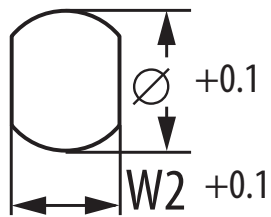


Shell Size	Dimensions in mm (inches)															
	L1		L2 MAX		L3		X MAX		D1		D2		W1		M Thread	
A	15.5	(0.61)	7.3	(0.29)	2.5	(0.10)	7.0	(0.28)	15.5	(0.61)	15.0	(0.59)	10.0	(0.39)	11 X 0.75	
B	15.5	(0.61)	7.4	(0.29)	3.0	(0.12)	4.0	(0.16)	18.5	(0.73)	17.9	(0.70)	13.0	(0.51)	14 X 1	
C	16.5	(0.65)	8.2	(0.32)	3.0	(0.12)	5.5	(0.22)	18.9	(0.74)	17.9	(0.70)	13.0	(0.51)	14 X 0.75	



Panel cut out

Size	Dimensions in mm (inches)			
	W2		Ø	
A	10.1	(0.40)	11.1	(0.44)
B	13.1	(0.52)	14.1	(0.56)
C	13.1	(0.52)	14.1	(0.56)

## Wire Size Recommendation

Contact Size		Wire Size
mm	Inches	
.6	.02	30-26 AWG

