

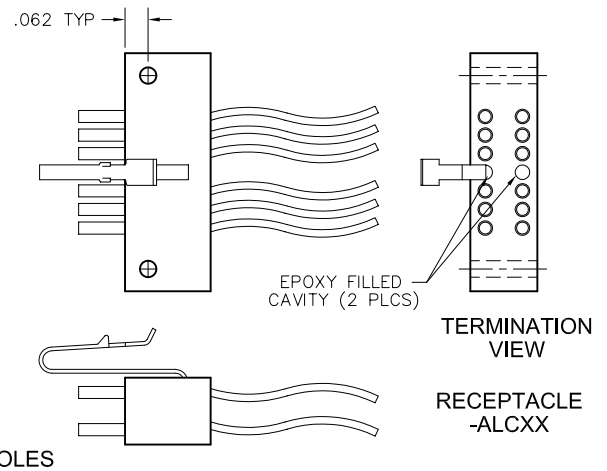
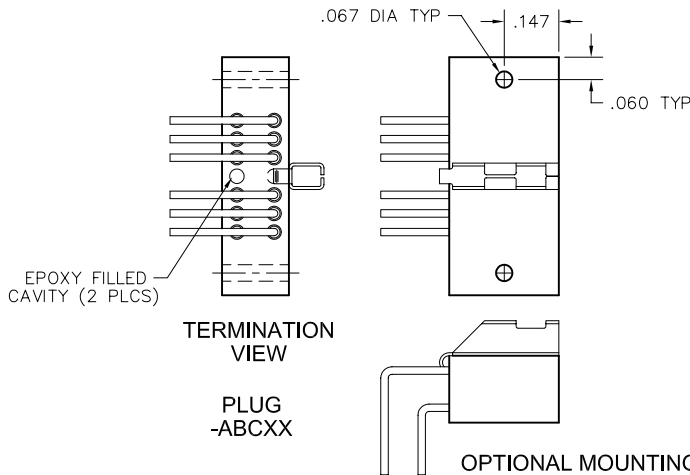
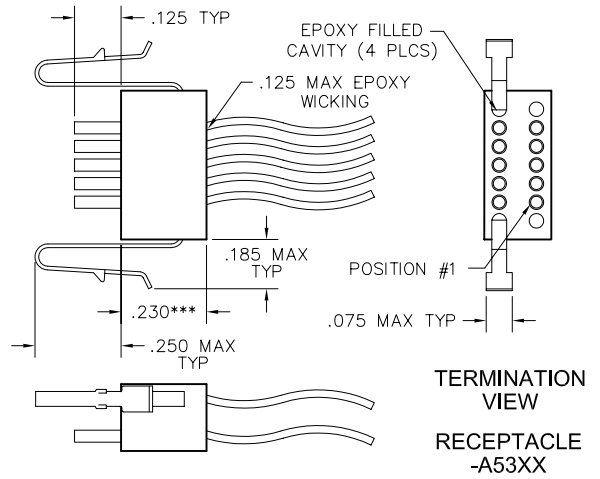
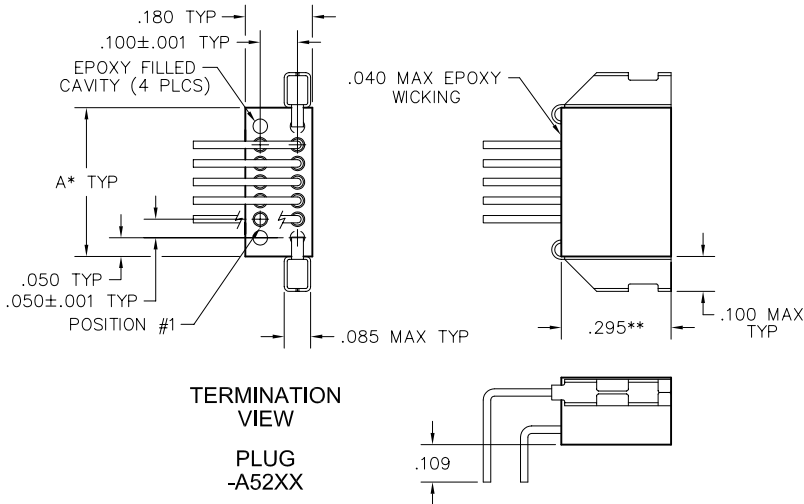
MA-241-010-261-A53WA

2 · ROW Strip Connectors Board to Cable

.050"

MA-2

4 thru 128 Contacts



DIMENSIONS

To determine connector length (Dim "A"):	
Multiply the number of cavities in one row by .050"	. "
Add fixed end lengths (constant, .025" x 2)	0.05"
Add .085" for each mounting hole	. "
Total Length:	. "

Notes:

- Length over 2" may require support to insure alignment
- * = Maximum length is 3.420". Maximum number of contacts must be reduced to accommodate hardware and mounting holes.
- ** = For cable applications, .295" becomes .390"
- *** = For solder cup or board mount applications, .230" becomes .135"