



Board SMT to Cable

.050"

9 thru 51 Contacts

Rugged Metal

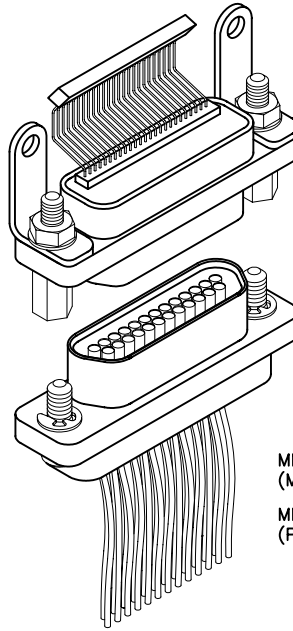
MM

Rugged Plastic

MN

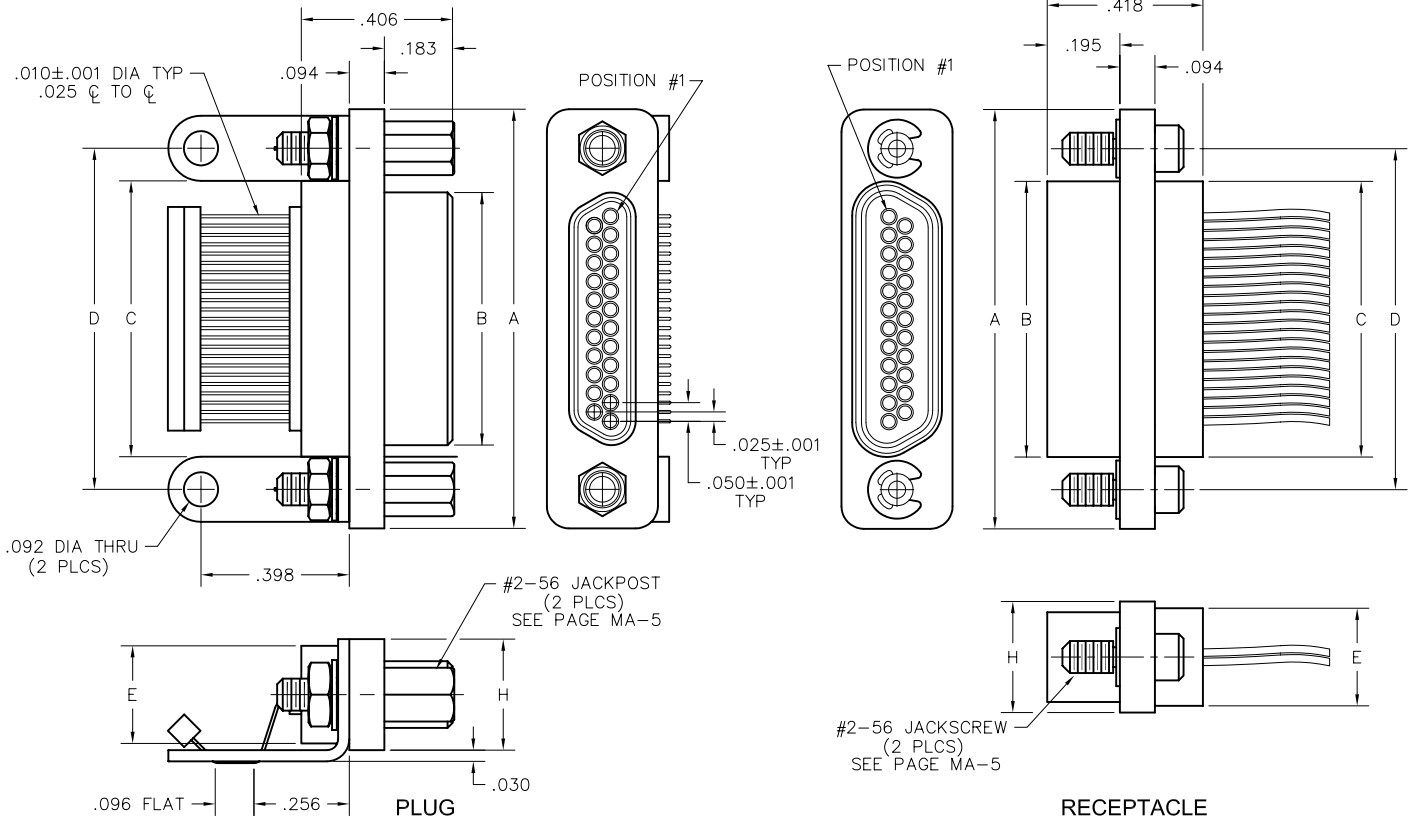
MM-212-025-175-320S
(METAL)

MN-211-025-175-320S
(PLASTIC)



MM-222-025-261-41WQ
(METAL)

MN-221-025-261-41WQ
(PLASTIC)



SIZE	CONTACT ROWS	DIMENSIONS							
		A	B		C	D	E	H	HARDWARE
			PLUG MAX	RCPT MAX					
9	2	.775	.334	.400	.390	.565	.270	.298	#2-56 UNC THD (.092 DIA THRU)
15		.925	.484	.550	.540	.715			
21		1.075	.634	.700	.690	.865			
25		1.175	.734	.800	.790	.965			
31		1.325	.884	.950	.940	1.115			
37		1.475	1.034	1.100	1.090	1.265			
51*		1.825	1.384	1.450	1.440	1.615			

* = 51 POSITION CONNECTORS ARE AVAILABLE IN METAL ONLY.