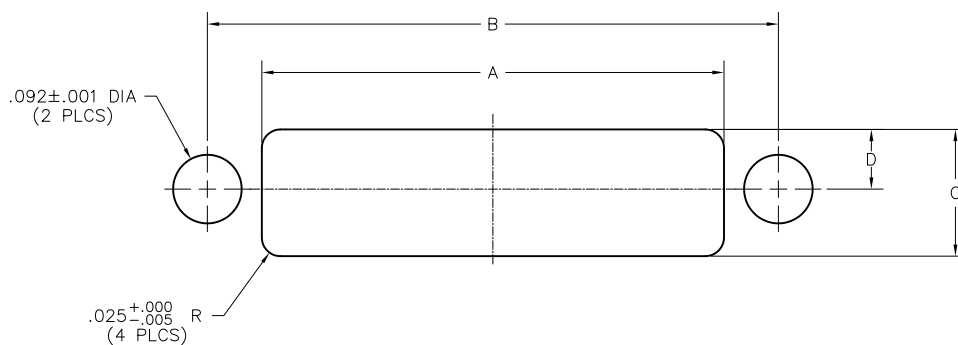




## Panel Mounting Dimensions for Rear Panel Mount Connectors



DIMENSIONS				
SIZE	A <sup>+.004</sup> / <sub>-.000</sub>	B ±.002	C <sup>+.004</sup> / <sub>-.000</sub>	D ±.001
9	.420	.566	.170	.080
15	.495	.641	.170	.080
21	.570	.716	.170	.080
25	.620	.766	.170	.080
31	.695	.841	.170	.080
37	.770	.916	.170	.080
51	.945	1.091	.170	.080
65	1.120	1.266	.170	.080
69	1.170	1.316	.170	.080
85	1.422	1.568	.195	.0925