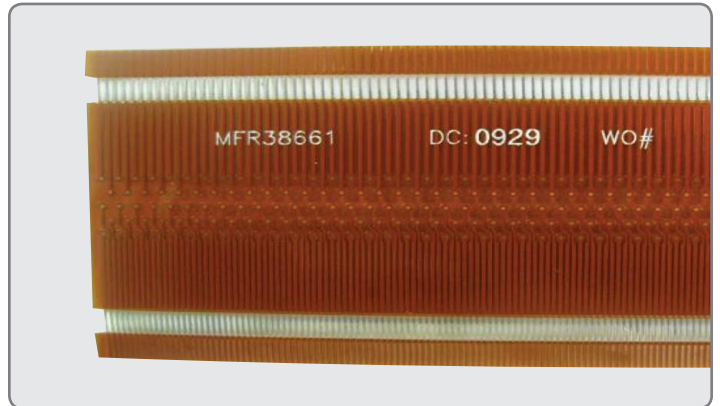
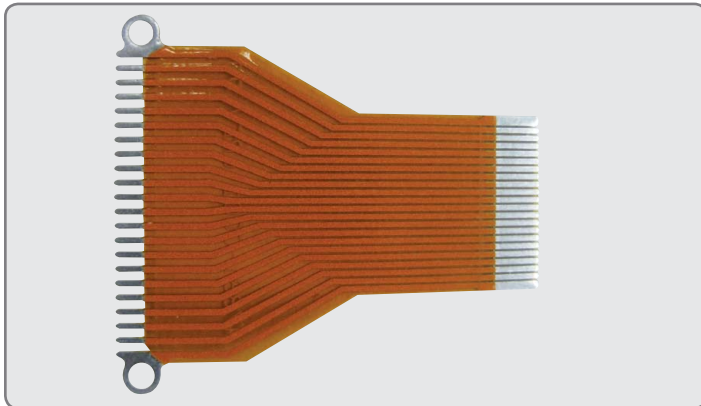
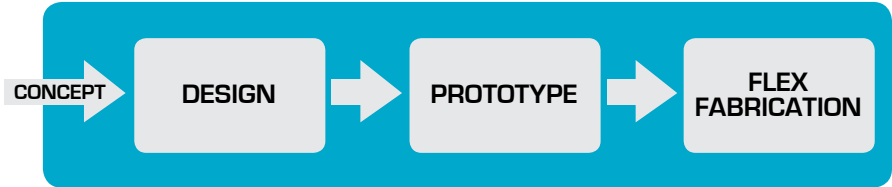




# FLEX FULL-SERVICE FLEXIBLE CIRCUIT SOLUTIONS

AirBorn's flexible circuit business has provided innovative and high quality flexible printed circuit and assembly solutions to the world for over 30 years. Our roots are in applications that demand high reliability such as medical, aerospace, instrumentation and defense.



AirBorn provides early stage technical support to allow system and device designers to solve interconnect design challenges utilizing a full range of unique flex circuit attributes. Over the years, we have taken over 2,500 designs into production. As our capability evolves, in combination with our extensive experience, AirBorn will continue to offer effective flex interconnect solutions to fit our customers' needs.

### FLEX TYPES

Single-sided Flex .....	1 layer
Double-sided Flex.....	2 layers
Multilayer Flex .....	3-8 layers
Multilayer Rigid Flex .....	2-12 layers
Sculptured Flex .....	1-3 layers
HDEC .....	1-2 layers
Extended-Length Flex .....	1-2 layers
	(up to 100 ft long)
Liquid Crystal Polymer (LCP) Flex .....	1-2 layers

### DIELECTRIC MATERIALS

Polyimide Film	≥ 0.5 mil
Polyester Film	1,2,3 mils
Polyimide/Epoxy Glass	≥ 5 mil

### ADHESIVES

Acrylic	≥ 0.5 mil
Epoxy	≥ 1 mil
Polyester	1, 2, 3 mils

### COPPER

Rolled Annealed	0.5-7oz
-----------------	---------

### CONDUCTOR

Line Width	3 mils
Spacing	3 mils

### ANNULAR RING

External PTH	2-5 mils
Internal PTH	1 mil
Min Drill Size	6 mils
Aspect Ratio	12:1

### TOLERANCE

Product Outline Tolerance	± 3 mils
---------------------------	----------

### SHIELDING

Copper	Solid
Copper	Crosshatch Pattern
Silver Ink	Solid

### ELECTRICAL

Impedance Control	± 5%
-------------------	------

### SURFACE

LPI Soldermask	
Bright Tin	
Solder Coat or Reflow	
Immersion Tin	
Immersion Silver	
Immersion Gold (ENIG)	
Electrolytic (Hard) Gold	
Tin/Lead	
Anti-Tarnish	
HASL (Hot Air Solder Leveling)	

### STIFFENERS

Polyimide Film	0.5 mil or >
Polyester Film	1 mil or >
Polyimide/Epoxy Glass	5 mils or >

### PANEL SIZES

12" x 18" Standard
18" x 24" Standard
Other Non-Standard